

We are certified.

- Quality management system acc. [ISO 9001](#)
- Environment management system acc. [ISO 14001](#)



Maschinentchnik Pretzschendorf GmbH

Dresdner Straße 18
01774 Klingenberg

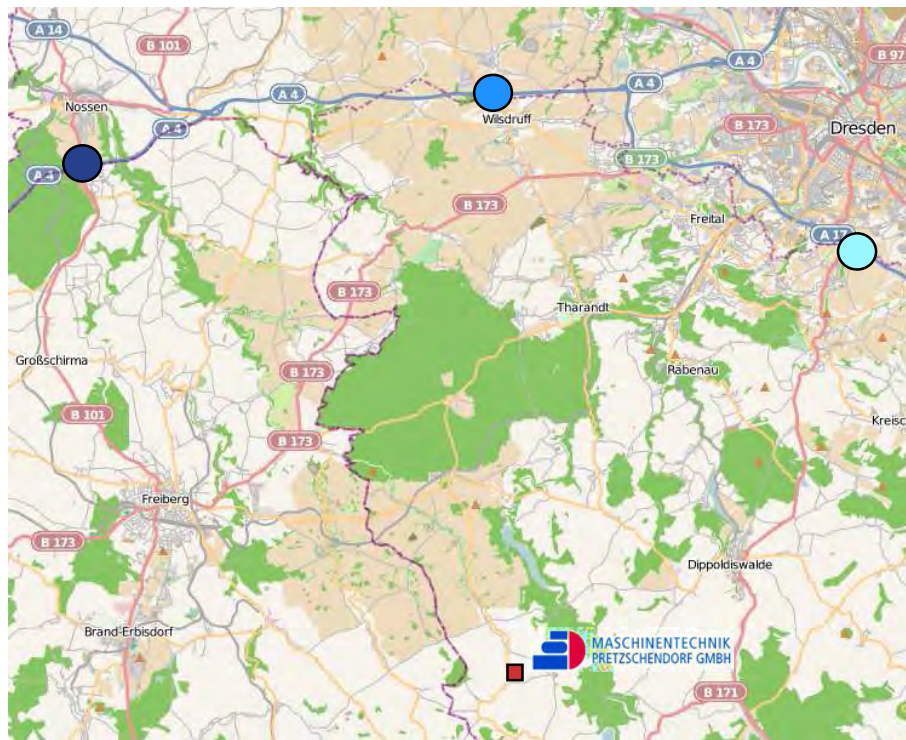
manager:

Dipl.-Kffr. Britta Hölper, Dipl.-Ing. Hans Möhling

place of company: Klingenberg

Labor court Dresden, HRB 504

We are member of the Möhling Group.



Quelle: OpenStreetMap Lizenz: CC-BY-SA

- A4 Exit Siebenlehn via Freiberg
- A4 Exit Wilsdruff direction Grumbach/Tharandt
- A17 Exit DD/Südvorstadt on B170 via Dippoldiswalde

Maschinentchnik Pretzschendorf GmbH
Dresdner Straße 18
01774 Klingenberg
Germany

Tel.: 035058 / 469-0
Fax: 035058 / 469-33
Mail: info@maschinentchnik.de
Web: www.maschinentchnik.de

ASSORTMENT VARIETY FROM SINGLE SOURCE

WE ARE YOUR PARTNER



CNC-machining · drawing parts · machine elements · DIN-parts

We make all products ourselves.

We are glad about your inquiry.

[www.maschinenttechnik.de](http://www.maschinentchnik.de)

www.maschinenttechnik.de

history

The Production Association "Maschinentchnik Pretzschendorf" counted 30 people at the founding in 1960. At that time the company produced spare parts mainly. Over the years we specialized in the production of drive types such as keys and Woodruff keys and became to the alone producer of these important parts in the GDR soon.



now

From our own production

drawing parts

of different materials
with the surface according to
customers request



for more please visit our website:

www.maschinentchnik.de/sonderteile.htm



... and produce in modern bildings with extensive CNC-technique.

Our machinery has CNC-vertical-milling-centres, conventional milling- and drilling-machines, flat- and roundtable-grinding machines, machines for the production of groove-pins, machines for production of tubular rivets and vibratory finisher for cleaning and polishing.



In our measure room we are able to:
- 2D, 3D
- roughness, hardness and thickness measurement and more.

We manufacture our own templates...

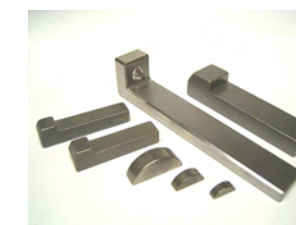
www.maschinentchnik.de

Fasteners

acc DIN or drawing

keys, Nose-wedges, Woodruff-keys, Sunk-keys

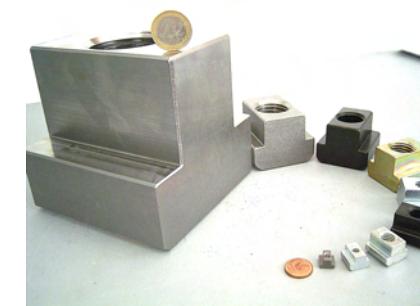
Keys acc. DIN 6885
Nose wedges acc. DIN 6887
Woodruff keys acc. DIN 6888
Keys acc. DIN 6886
Tangential keys acc. DIN 268, 271
Spigot keys



Nuts

Nuts for T-slots acc. DIN 508
Rhombus nuts

Axle brackets acc. DIN 15058
Square weld nuts acc. DIN 928
Square nuts acc. DIN 562



Tubular rivets

acc. DIN 7340
(acc. DIN 7339 by request)
Tube cuttings

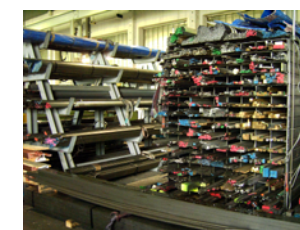


Groove pins

pins with round head acc. ISO 8746
pins with flat head acc. ISO 8747



Material stock



In storage we have a big range of iron and non-iron metals available. Standard dimensions in flat and square can be procured at short notice.

Following heat treatments and surfaces are possible (in wage work), for example: zinc-, chrome-, phosphate-, nickel-coating, anodizing, sandblast, glass bead blast, hardening, tempering, case hardening... and more.

Please to request.

[www.maschinenttechnik.de](http://www.maschinentchnik.de)